

Feed and separation rollers (Trays 2-5)

△ **CAUTION:** Do not touch the spongy roller surface unless you are replacing the roller. Skin oils on the roller can cause paper pickup problems.

1. Locate the feed and separation rollers for the tray.

💡 **TIP:** You do not have to separate the product from the feeder to remove these rollers. Remove the cassette, and then reach up into the cavity to remove the rollers.

2. Release two tabs, and then remove the rollers.

💡 **Reinstallation tip** When you reinstall the rollers, make sure that the rollers snap into place.

Figure 2-20 Remove the Pickup and feed rollers (Trays 2-5)

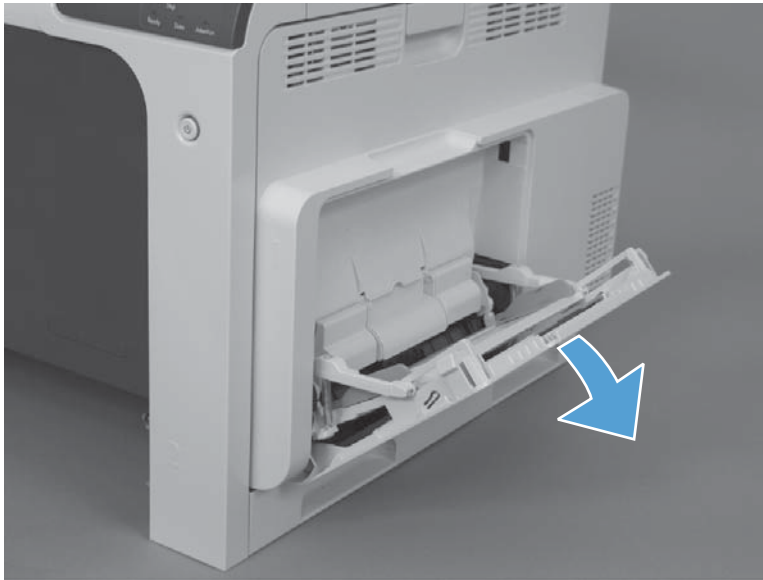


Pickup roller (Tray 1)

△ **CAUTION:** Do not touch the spongy roller surface unless you are replacing the roller. Skin oils on the roller can cause paper pickup problems.

1. Open Tray 1.

Figure 2-21 Remove the pickup roller (Tray 1) (1 of 5)



2. Push the top edge of the cover to release the tabs.

Figure 2-22 Remove the pickup roller (Tray 1) (2 of 5)



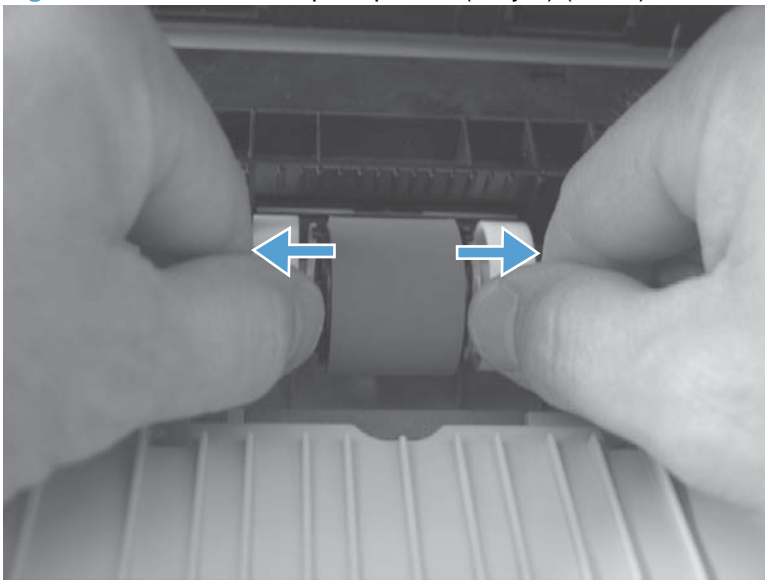
3. Open the right-door assembly, and then remove the cover.

Figure 2-23 Remove the pickup roller (Tray 1) (3 of 5)



4. Release the two blue tabs.

Figure 2-24 Remove the pickup roller (Tray 1) (4 of 5)



5. Rotate the roller body away from the product to remove it.

Figure 2-25 Remove the pickup roller (Tray 1) (5 of 5)

