

ADF pickup and feed rollers

1. Open the ADF top cover.



Figure 6-32 Remove the ADF pickup and feed rollers (1 of 3)

2. Push down on the locking tab (callout 1), and rotate the top of the assembly away from the ADF.

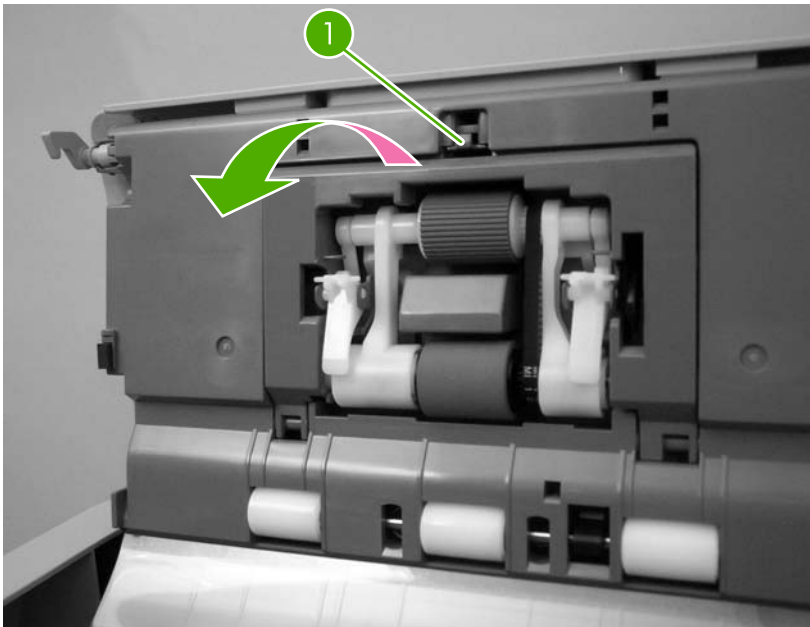


Figure 6-33 Remove the ADF pickup and feed rollers (2 of 3)

3. Release the front (gear end) of the roller assembly drive shaft (callout 2), and slide (callout 3) the assembly toward the front of the MFP to remove it.

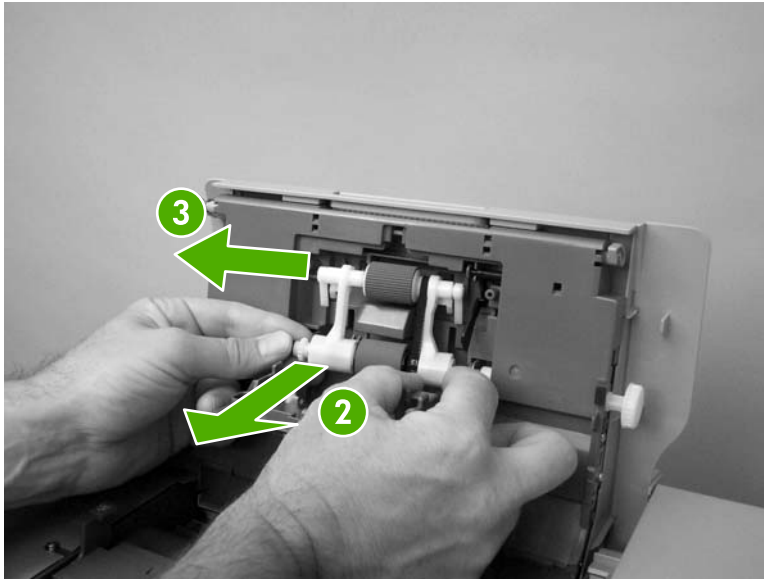


Figure 6-34 Remove the ADF pickup and feed rollers (3 of 3)

ADF separation pad

1. Open the ADF top cover.



Figure 6-35 Remove the ADF separation pad (1 of 4)

2. Locate the ADF separation pad (callout 1).



Figure 6-36 Remove the ADF separation pad (2 of 4)

3. Raise the separation pad frame assembly using the green lever, and push the bottom edge (white plastic) of the separation pad away from the frame.



Figure 6-37 Remove the ADF separation pad (3 of 4)

4. Push the separation pad out of the frame.



Figure 6-38 Remove the ADF separation pad (4 of 4)